

COR-VET

Career orientation in vocational education and training in Europe

The new COR-VET concept of the Career Orientation Approach in Germany and German didactical material for Career Orientation

Workshop II: Turkey - KIRŞEHİR - THE DISCUSSION AND SURVEY WORKSHOP
Kırşehir, 12th of March 2012

Chair of Business and Human Resource Education II
Prof. Dr. Marc Beutner



WP PADERBORN
Department für Wirtschaftspädagogik
BUSINESS AND HUMAN RESOURCE EDUCATION





Education and Culture DG
Lifelong Learning Programme



Universität Paderborn - Fakultät Wirtschaftswissenschaften

Department Wirtschaftspädagogik
Business and Human Resources Education

Five Steps in German Vocational and Career Orientation



Source
Beutner, M. / Gebbe, M. / Kremer, H.-H.:
Berufsbildung im Justizvollzug – Das
Projekt TANDEM. In: Kölner Zeitschrift für
Wirtschaft und Pädagogik. 24. Jg., Heft
47, Köln 2009, S. 39-70
or
BEUTNER, M. / FREHE, P. / KREMER,
H.-H. / ZOYKE, A.: Individuelle Förderung
– Einblicke in Strukturen und erste
empirische Ergebnisse des
Modellversuchs InLab. In: Kölner
Zeitschrift für Wirtschaft und Pädagogik.
24. Jg., Heft 47, Köln 2009, S.15-38

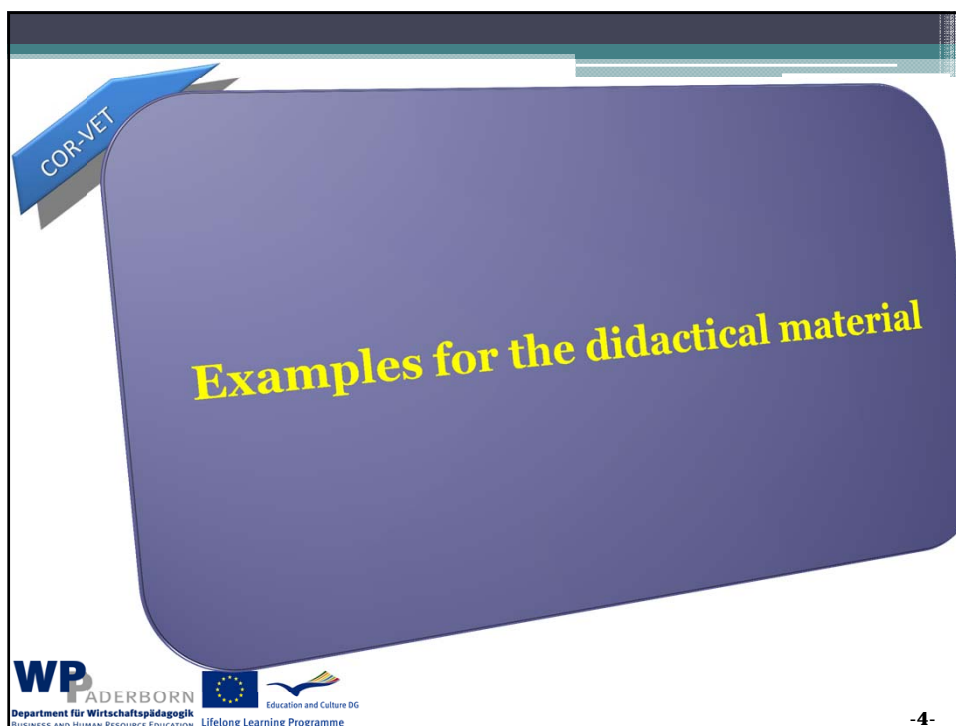
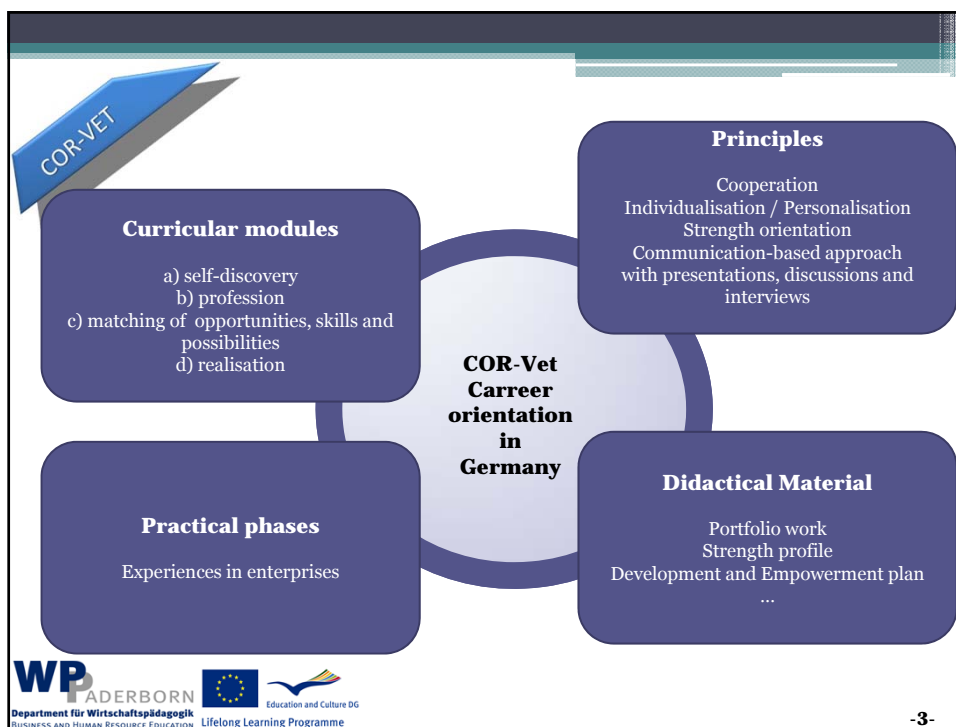


WP PADERBORN
Department für Wirtschaftspädagogik
BUSINESS AND HUMAN RESOURCE EDUCATION



Education and Culture DG
Lifelong Learning Programme

-2-



COR-VET

A portfolio is more than a folder!

WP TADARBORN
 Department für Wirtschaftspädagogik
 BUSINESS AND HUMAN RESOURCE EDUCATION

Education and Culture DG
 Lifelong Learning Programme

-5-

COR-VET

Connecting relations between elements of a portfolio

basis for

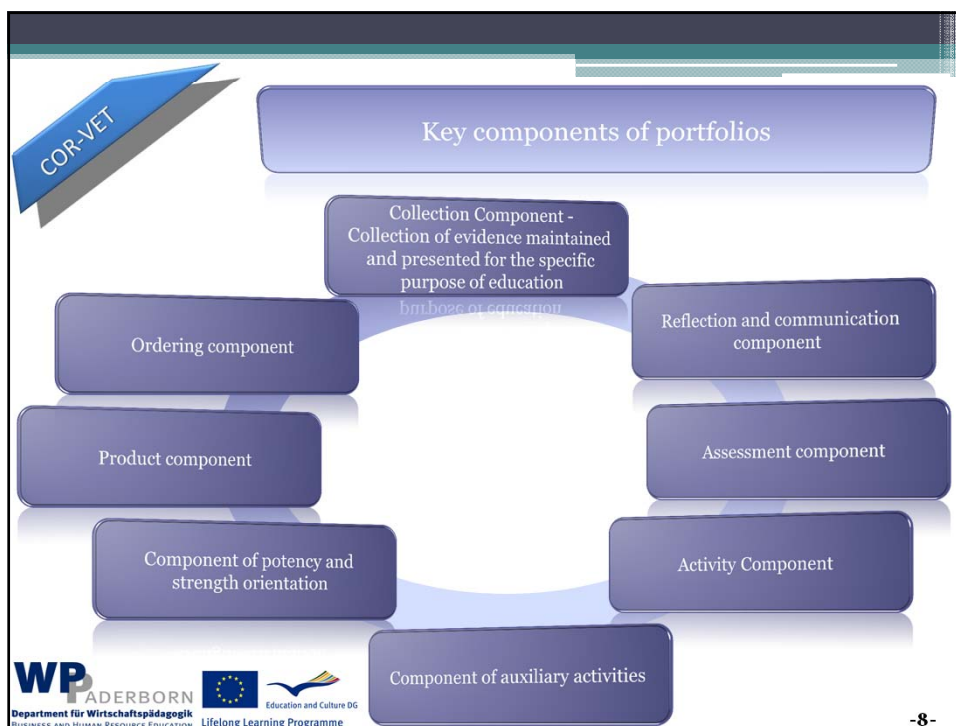
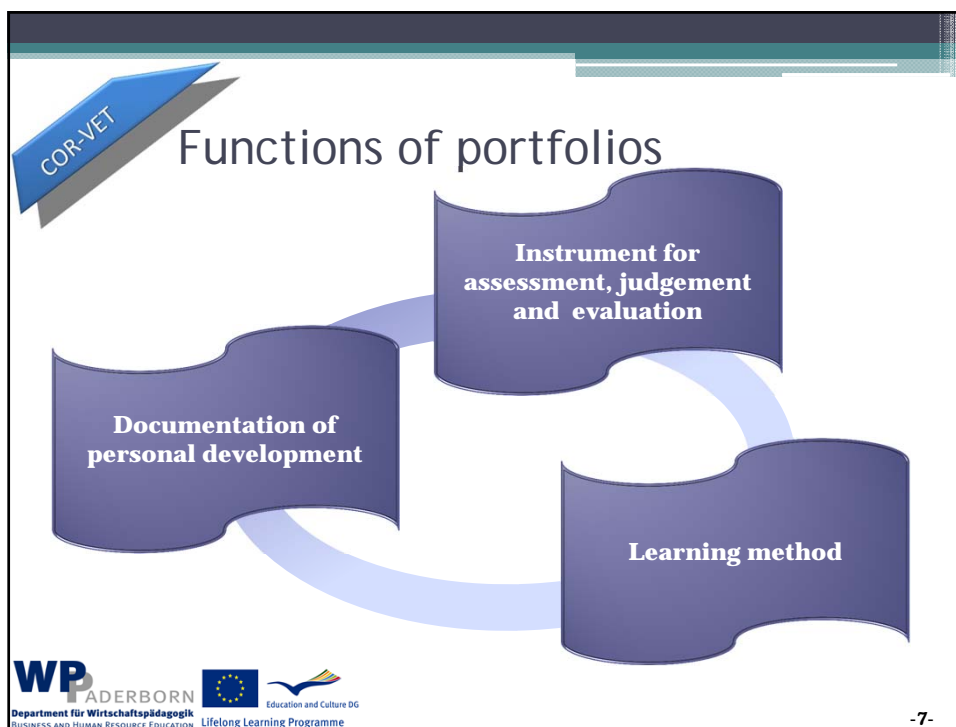
basis for

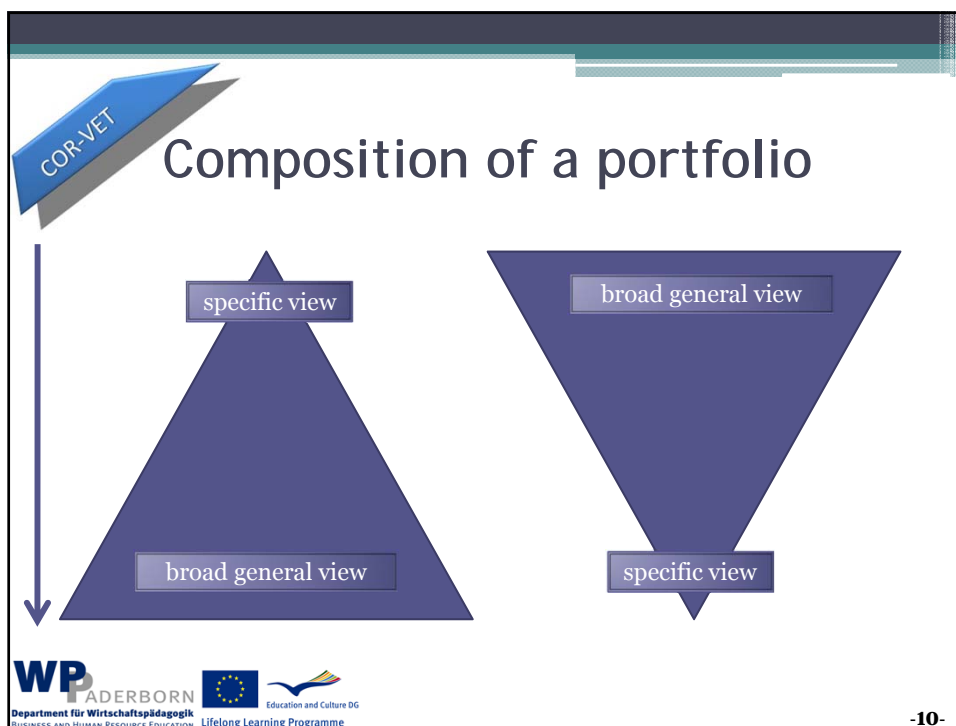
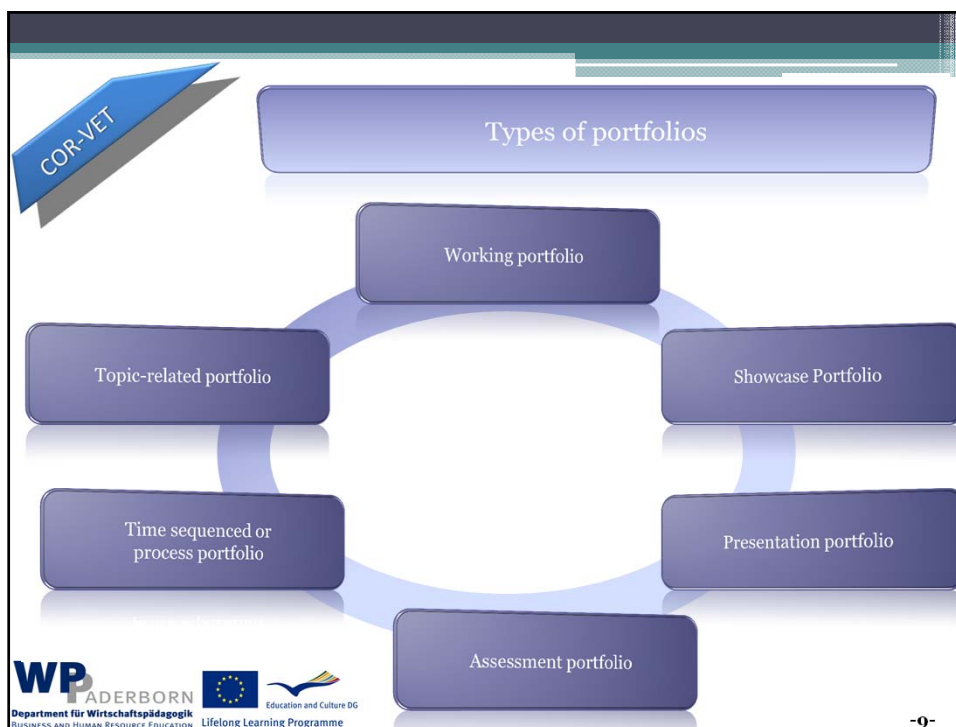
interdependency


WP TADARBORN
 Department für Wirtschaftspädagogik
 BUSINESS AND HUMAN RESOURCE EDUCATION

Education and Culture DG
 Lifelong Learning Programme

-6-











Portfolios und individual support


- Documentation, analysis and reflection on the development process as well as on the learning process
- Show personal knowledge and a profile of competencies.
- Portfolio is an instrument for metacognitive activities
- A portfolio is a basis for an individual reflection process based on common categories and requirements to make a discussion much easier

Department für Wirtschaftspädagogik
 BUSINESS AND HUMAN RESOURCE EDUCATION





Lifelong Learning Programme

-11-



Using Portfolios - Possible Values

- Portfolios offer special views of student growth
- A portfolio integrates self-evaluation
- By using portfolios the creativity is encouraged
- Portfolios can be progress and goal related
- Portfolios offer a direct link learning to the world of work
- Create awareness of own strengths
- Portfolios can be used to monitor learner progress

Department für Wirtschaftspädagogik
 BUSINESS AND HUMAN RESOURCE EDUCATION

Lifelong Learning Programme

-12-

COR-VET

Contact

Universität Paderborn
Department Wirtschaftspädagogik
Business and Human Resources Education
Lehrstuhl Wirtschaftspädagogik II
Warburger Str. 100

33098 Paderborn

- Prof. Dr. Marc Beutner
Tel: +49 (0) 52 51 / 60 - 23 67
Fax: +49 (0) 52 51 / 60 - 34 19
E-Mail: Marc.Beutner@uni-paderborn.de



WP PADERBORN
Department für Wirtschaftspädagogik
Business and Human Resource Education

 Education and Culture DG
Lifelong Learning Programme

-13-